

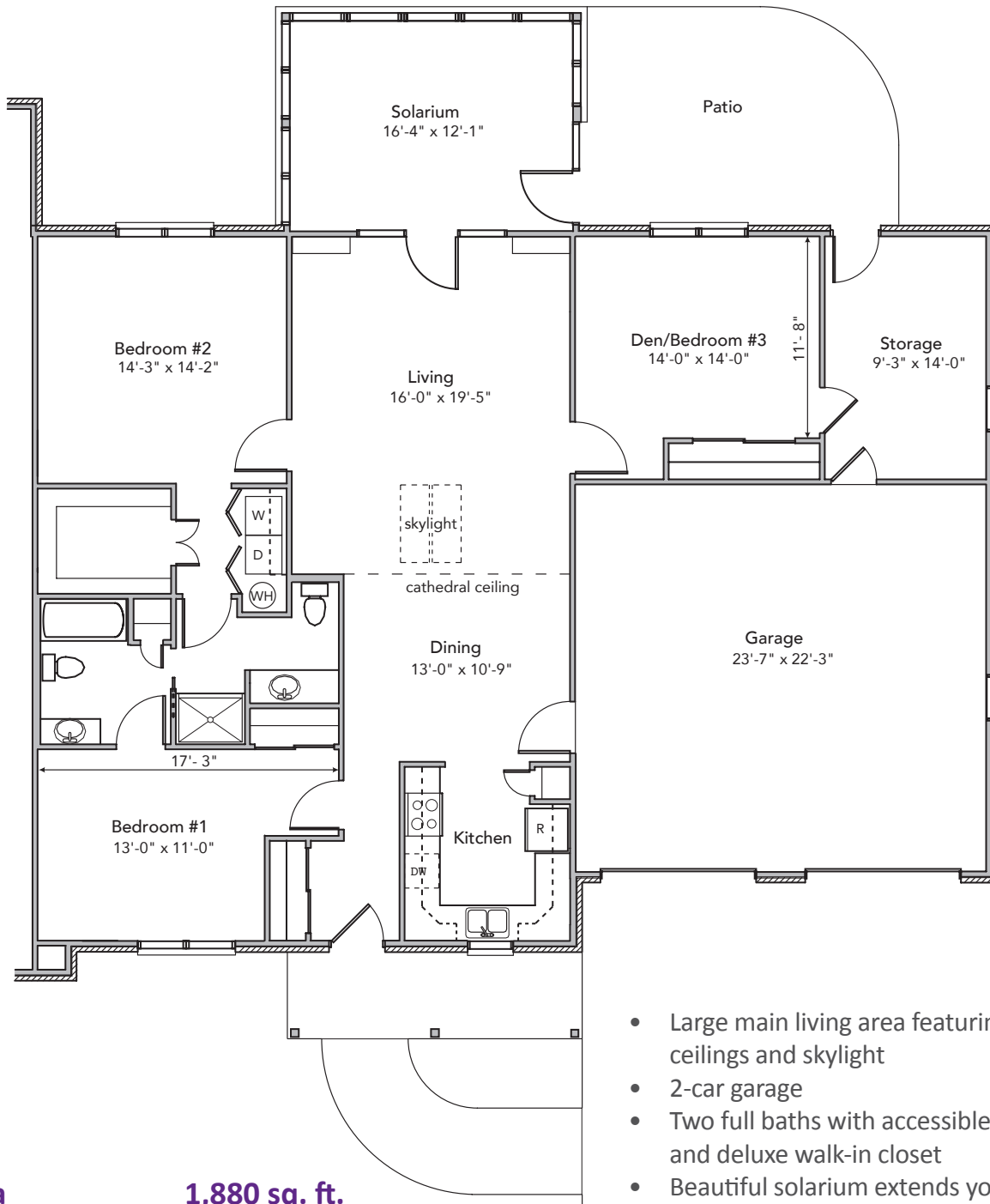
Three Bedroom, Two Bathroom Home

INDEPENDENT LIVING

BERKELEY SQUARE



COMMUNITY FIRST SOLUTIONS



Living Area 1,880 sq. ft.
Garage Area 570 sq. ft.

Total Building Area 2,450 sq. ft.

Actual floor plans, square footage and price may vary based on availability. Pricing is subject to change.

- Large main living area featuring cathedral ceilings and skylight
- 2-car garage
- Two full baths with accessible laundry and deluxe walk-in closet
- Beautiful solarium extends your living area year round
- Large walk out patio connected to extra storage area, perfect for lawn furniture and gardening supplies
- Third bedroom creates a great space for den or hobby area