

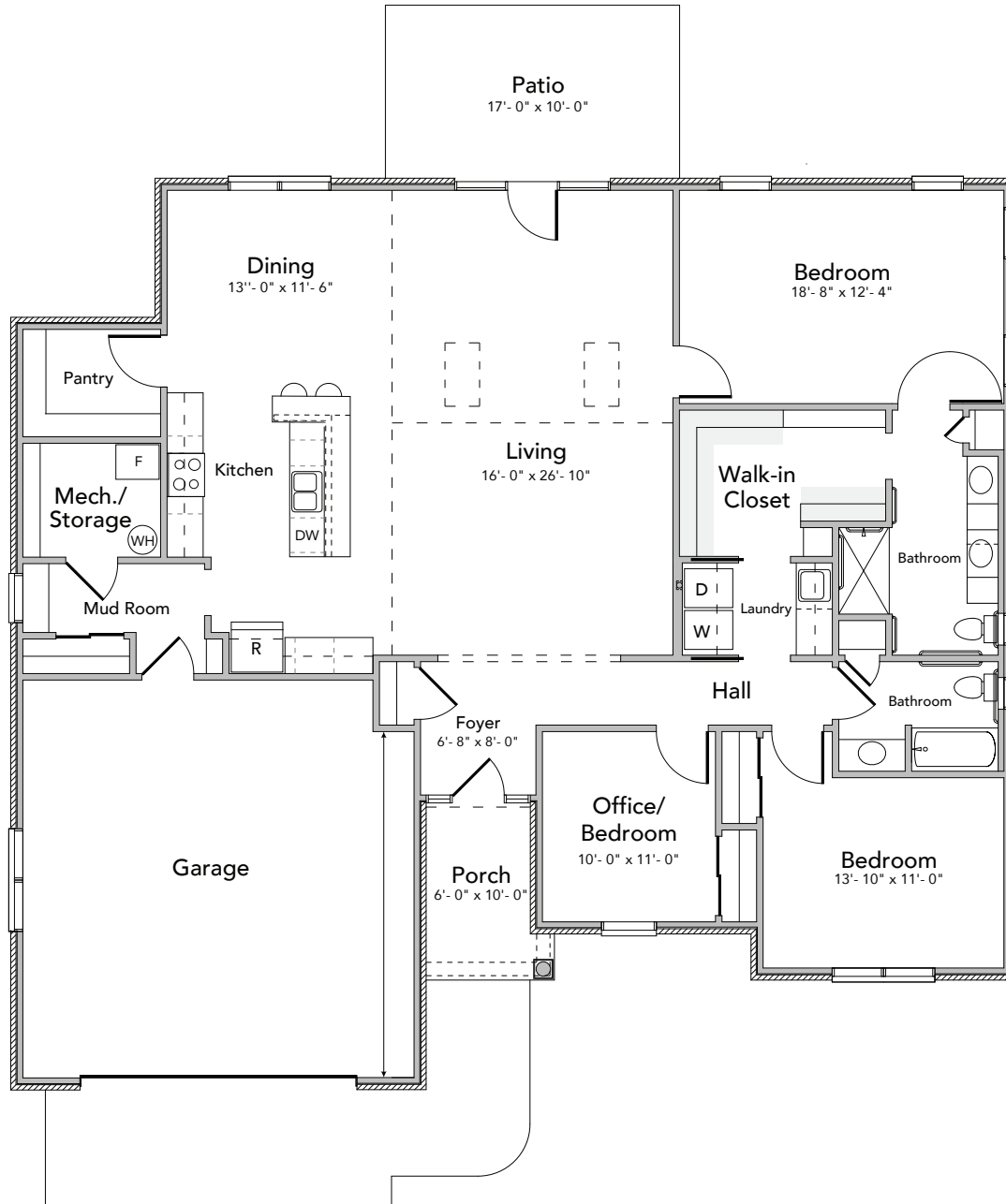
# 7 Independence Crescent

## INDEPENDENT LIVING

BERKELEY SQUARE



COMMUNITY FIRST SOLUTIONS



Living Area  
2,120 sq. ft.  
Garage Area  
564 sq. ft.  
Porch  
64 sq. ft.

**Total Building Area**  
2,748 sq. ft.

**Investment**  
Community Fee  
\$472,000  
Monthly Rate  
\$3525

- 3 bedroom, 2 bathroom, 2 car garage
- Primary suite features expansive walk-in closet with direct laundry room access
- Open kitchen with bar seating and open layout to living room
- Large walk-in pantry
- Walk out patio
- Covered front porch